

THE TEAM

Tamsin Evans (Director), Rebecca Boyd (Project Manager), Helen Bradley (Creative Development Co-ordinator), Catherine Laitak (Creative Lifestyles Officer), Abbie Hosier (Sexual Health Promotions Officer), Abi Barnsley (Development Officer), Chrissie Hitchiner (Creative Schools Worker). **Additional team:** Pete Van Neste (Technician), Mike Harris (Male team leader), Andrew Harris (Male team), Greg Schofield (male team/band), Dan Anderson (band), Dan Jones (band), Tim Anderson (band)

THINGS WE NEED

- An Administrator for Pure
- A band coordinator
- A male team leader
- A bookings coordinator

coming up

- 5/6 *Shine* (Maghull High School)
- 9/6 *Hold Me* (Childwall High School)
- 12/6 Assembly & workshop (Egremont Primary School)
- 16/6 Week at Bebington High School – all three plays and seeing the whole of years 8, 9 & 10 (end 20/6)
- 25/6 Yr 6 transition workshops (Portland Primary School)
- 29/6 Pure partners event – ‘Strawberries and Cream at Strawberry Field’
- 30/6 Week at Prenton Girls School (end 4/7)
- 10/7 *Hold Me* (Belvedere School)
- 15-16/7 Pure Creative Arts School performance of *Joseph*
- 19/7 Upside down event (venue tbc)
- 28-29/7 Tamsin Evans speaking at Soul Survivor/Soul Sista
- 2/8 Salvation Army Summer School
- 11/8 Pure Creative Arts School training week
- 18/8 Pure Creative Arts School musical theatre summer school week

LISTEN

www.myspace.com/pureliverpool

KEEP UP-TO-DATE

email info@purecreativearts.co.uk to receive our monthly prayer letter by email

BOOK US AND RECOMMEND US

The following are available

- teachers’ resource pack
- information pack
- demo CD

Just email us to receive any of these.

Pure can provide assemblies, workshops, productions, band performances, PE, PSHE and RE lessons, after-school and lunchtime clubs and would love to build links with more schools, both in Liverpool and nationally. Do please pass on our details and contact us for any further information at all.

Strawberry Field
Beaconsfield Road
Woolton
Liverpool
L25 6EJ

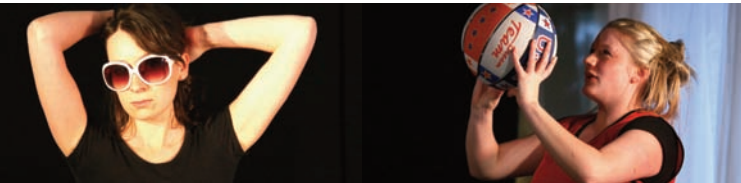
telephone: 0151 428 6678
email: tamsin.evans@purecreativearts.co.uk

www.purecreativearts.co.uk

flyer designed by dotsonpage— info@dotsonpage.co.uk



...supporting young people in discovering and creatively developing their individual identity, worth and potential...





Hello, and welcome to the Pure newsletter, a way in which we hope to keep you up to date with what we have been doing over the last couple of months. It's been a pretty hectic summer, one that has seen the team grow, our travelling extend and more schools reached. But most of all I've

been excited by all that God has been doing in the lives of the young people that we meet and have the privilege to work with. We hope you will be too and that you'll continue to support and pray for us as we continue in all the work God is opening for us. Hope you have a lovely summer and enjoy reading our news!

Tamsin Evans, Director

THE PAST TERM IN A NUTSHELL

...what has happened...

22 theatre productions, 39 workshops, 29 pupils enrolled in the Creative Arts School, 2 Creative Arts School performances of *Cats*, 6 impact groups, 2 assemblies, 1 detached team, 1 alpha group, and 4 band performances.

11 Schools visited (Maghull, Halsnead Primary, St Francis Academy, Childwall, Christian Fellowship School, St John Plessington, Shorefields, Belvedere, St Georges, St Winifreds, St Hilda's)

1 fantastic new trustee – Kate Harding!

3 new volunteers – the lovely Abbie, Chrissy and Abi!

6 new songs written.

Album recorded.

1 article in the Times Educational Supplement.

'Hold Me' Valentines event at St Hilda's School.

Contact with approx 4800 young people.

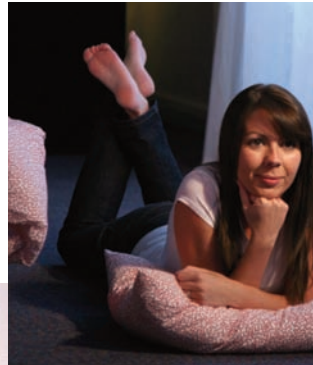
2 fantastic Upside Down events.

Many young people responded and were prayed for and some made first time commitments.

ASSEMBLIES

Pure delivers assemblies in both primary and secondary schools and these usually consist of a song performance, a dance performance, a sketch and a talk. We pray children and young people engage with what they hear and take something away. Please pray for that too!

'What a great assembly this morning, Kids were made up and staff described it as outstanding'



PRODUCTIONS AND WORKSHOPS

Pure offers a range of practical workshops for schools in areas of dance, drama and singing, but also specific interactive workshops designed to complement our productions which allow young people to react, discuss and respond to their own feelings about issues presented in the play.

Mirror Mirror is a short play that looks at the issue of body image, based on one girl's experience of an eating disorder, her struggle and how she begins to overcome it. *Hold Me* follows four girls as they tackle the pressures surrounding sex and relationships and the pressure to have sex in order to gain physical affirmation. The play shows how even the smallest of decisions can impact our lives, and portrays all the feelings and emotions that come with the consequences. *Shine* looks at the issue of self-harm as it follows four struggling individuals and the coping mechanisms they use to express the pain they feel. *Shine* uses sounds to build atmosphere and tension, and is street-dance based, using movement and rhythm to communicate with a modern teenage audience.



PRAYER POINTS

- For a continued increase in school bookings
- For favour in each of the schools we work in and good relationships with teachers
- For more opportunities to talk openly about God in assemblies and workshops



IMPACT GROUPS

...weekly lunchtime/after-school groups...

Led by a member of the pure team, impact groups use fun activities including drama, dance, discussion and sport to look at topics that influence young people today. Series include: identity, pressure, purpose, choices, dreams and love. Impact groups are a fantastic tool for building relationships with students in schools and a way to follow up the theatre productions we deliver. Maintaining relationships with students is an integral part of enhancing the work we do. Building trust and self-esteem leads to further progress and more lasting effect with the issues we cover.

Impact groups currently run in Belvedere School, Shorefields School, Childwall School, Maghull School, Christian Fellowship School and St Hilda's School.

'I have learnt I can go to God with my problems'

'Impact has really helped me as its given me a chance to talk about stuff I wouldn't usually, especially in school. I've learnt to open up more and to trust people more'

UPSIDE DOWN EVENTS

Four times a year pure runs a day of worship, teaching, pampering, fun and laughter for girls from impact groups. The aim of these events is to raise up this generation to be pure and set apart for Jesus, and empower them to live a life with no compromise. These events provide the next step for young people to make a decision to follow Jesus. Last term saw a girl make a commitment – please pray for these events...

PRAYER POINTS

- For more groups to be set up in the schools we work in
- For girls to attend regularly and the leaders to see breakthrough in the lives of the girls who attend
- As more groups are established, for volunteers from outside the team to run some.